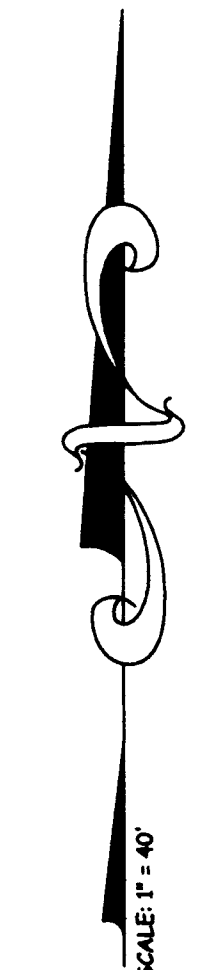
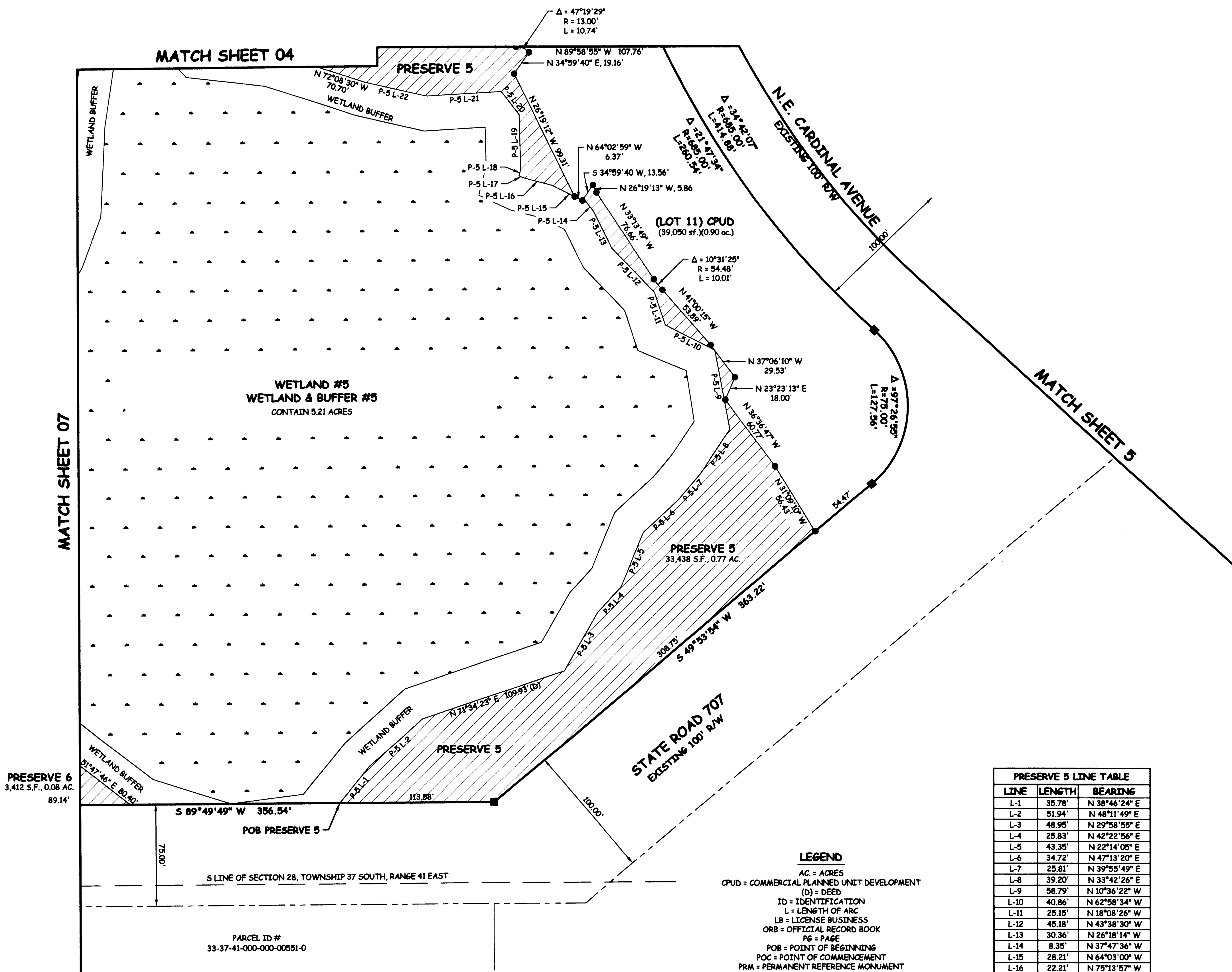


NEW AVONLEA P.U.D.

LYING IN A PORTION OF SECTIONS 28 AND 29, TOWNSHIP 37 SOUTH, RANGE 41 EAST,
CITY OF STUART, MARTIN COUNTY, FLORIDA.

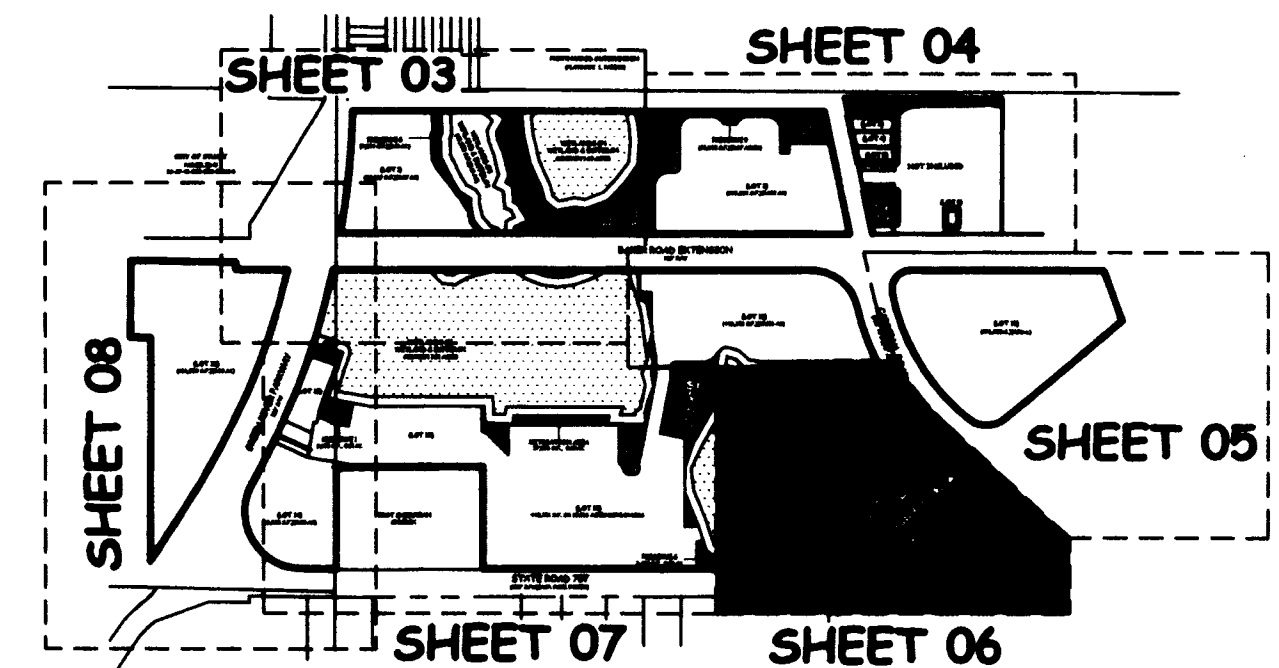
PLAT BOOK: 17
PAGE: 35



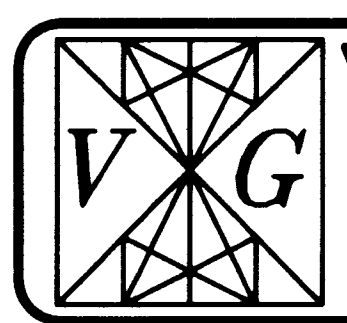
PRESERVE 5 LINE TABLE

LINE	LENGTH	BEARING
L-1	35.78'	N 38°46'24" E
L-2	51.94'	N 48°11'49" E
L-3	48.95'	N 29°58'55" E
L-4	25.83'	N 42°22'56" E
L-5	43.35'	N 22°14'08" E
L-6	34.72'	N 47°13'20" E
L-7	25.81'	N 39°55'49" E
L-8	39.20'	N 33°42'26" E
L-9	58.79'	N 10°36'22" W
L-10	40.86'	N 62°58'34" W
L-11	25.15'	N 18°08'26" W
L-12	45.18'	N 43°38'30" W
L-13	30.36'	N 26°18'14" W
L-14	8.35'	N 37°47'36" W
L-15	28.21'	N 64°03'00" W
L-16	22.21'	N 75°13'57" W
L-17	2.88'	N 63°01'00" W
L-18	4.50'	N 14°22'05" E
L-19	39.77'	N 01°18'05" W
L-20	21.38'	N 37°47'36" W
L-21	54.57'	S 86°45'07" W
L-22	47.54'	N 77°12'45" W
L-23	24.95'	N 81°13'01" W

- LEGEND**
- AC = ACRES
 - CPUD = COMMERCIAL PLANNED UNIT DEVELOPMENT
 - (D) = DEED
 - ID = IDENTIFICATION
 - L = LENGTH OF ARC
 - LB = LICENSE BUSINESS
 - ORB = OFFICIAL RECORD BOOK
 - PS = PAGE
 - POB = POINT OF BEGINNING
 - POC = POINT OF COMMENCEMENT
 - PRM = PERMANENT REFERENCE MONUMENT
 - R = RADIUS
 - RPUD = RESIDENTIAL PLANNED UNIT DEVELOPMENT
 - R/W = RIGHT OF WAY
 - S.F. = SQUARE FEET
 - P-9 L-1 = PRESERVE 9, LINE 1
 - = SET 5/8" IRON ROD/CAP "VELCON LB 4942"
 - = SET 4"x4" CONCRETE MONUMENT "PRM LB 4942"
 - Δ = CENTRAL ANGLE OF CURVE



PLAT PREPARED BY:
VELCON GROUP, INC.
ENGINEERS & SURVEYORS
CERTIFICATE OF AUTHORIZATION NO. LB 4942
702 S.W. PORT ST. LUCIE BLVD.
PORT ST. LUCIE, FLORIDA 34953
PHONE (772) 879-0477, FAX (772) 871-6659
Web Site: www.velcongroup.com



SHEET 6 OF 8